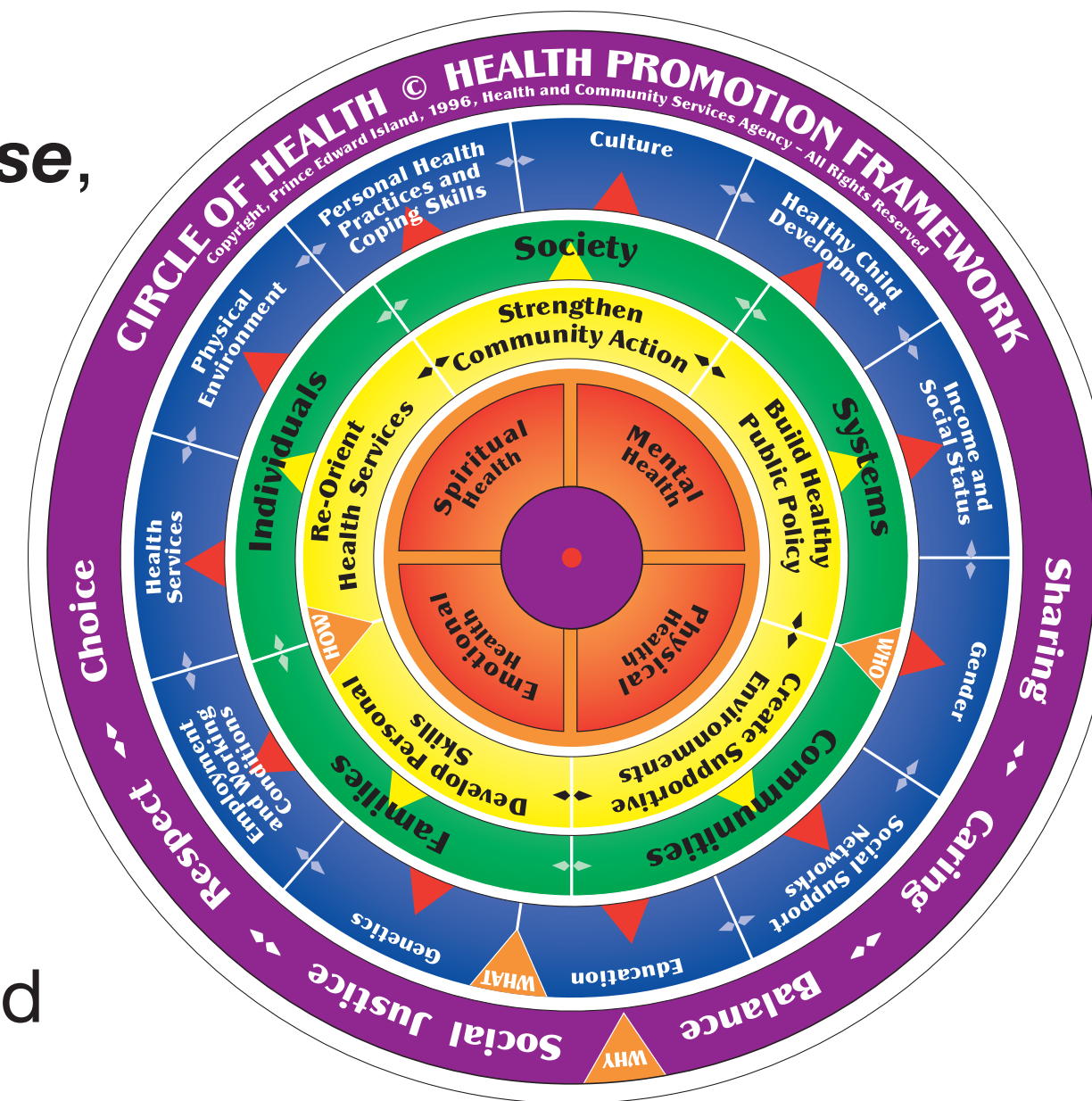


Development and Uptake of the Circle of Health A Model of Best Practice in Shared Leadership

Patsy Beattie-Huggan – The Quaich Inc. – Charlottetown, Prince Edward Island, Canada

A progressive *partnership* of government and civil society organizations, with *agreed purpose*, values, and principles of community development, adult education, qualitative research, provided *shared leadership* and resources to the creation of a framework and tool that encourages broad systems thinking.

The Circle of Health's universal applicability is evident from its uptake across languages and cultures, and credit is given to the inclusive and comprehensive process of its development.



Purpose:

1. Promote a common understanding of health promotion
2. Assist people to locate links and contributions in health promotion work
3. Provide direction for strategic planning for health promotion.

Challenge: To create a practical handheld framework for policy makers, researchers, academics and community members, that is based on evidence and useful for education, partnership development and health promotion planning. The compass rose provided inspiration!

Validation:

Consultation with multiple stakeholders, Aboriginal elders, self-help groups, people with intellectual disabilities validated the concept, recommending addition of First Nations Medicine Wheel, determinants of gender and culture, literacy considerations in a movable tool that encompasses the needs (goals), why (values), what (determinants), who (populations) and how (strategies - Ottawa Charter). Plain language materials were also developed to support use of the COH.

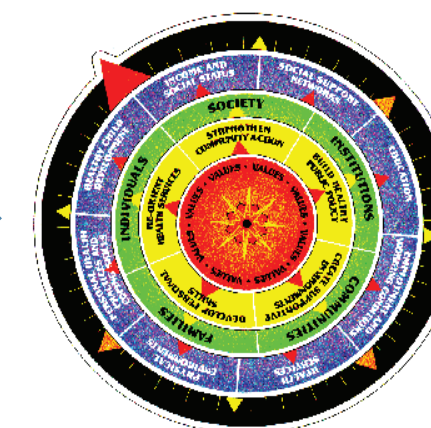
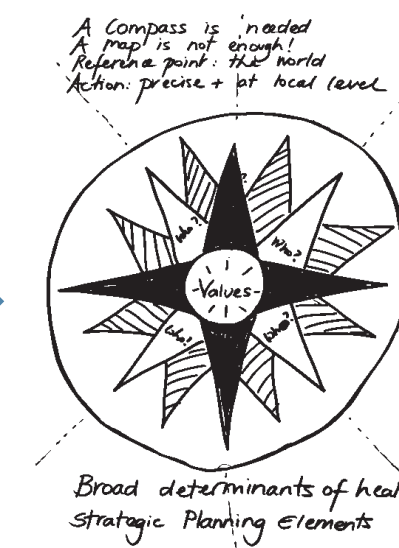
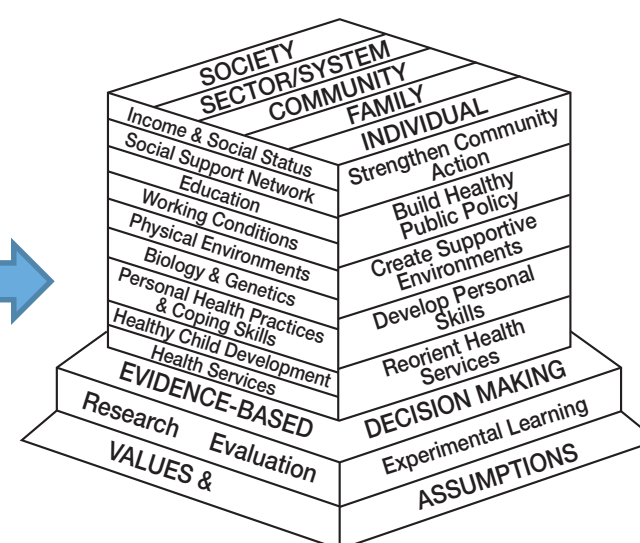
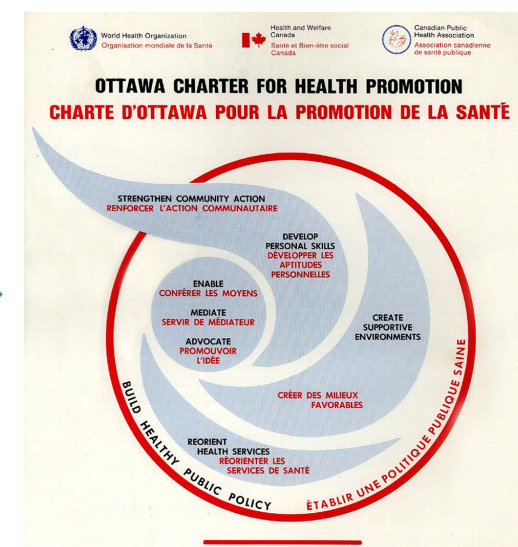
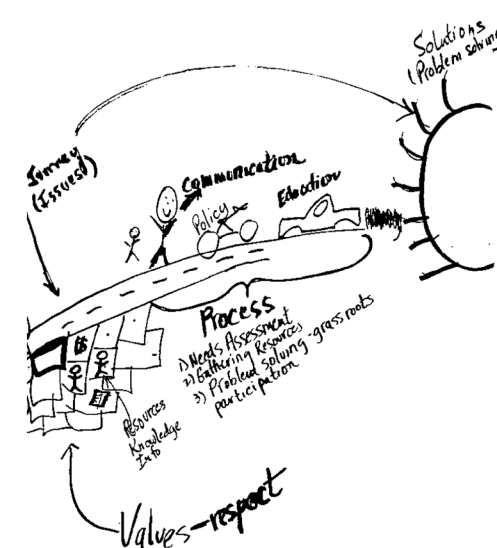
"Developed by many ordinary and extraordinary people" (Stoddard, 2002)

Developed: 1995-1996 PEI, Canada

Unique consultative process

5 Partners + 80 stakeholders

Now available in 6 languages



THE Quaich INC.

Consulting & Marketing of Health Innovations

Contact:
Patsy Beattie-Huggan
25 Bolger Dr, Charlottetown
PE C1A 7T2
(902) 894-3399
patsy@thequaich.pe.ca
www.circleofhealth.net